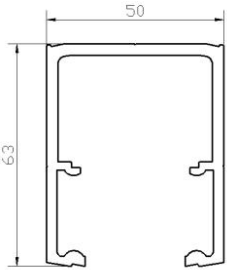
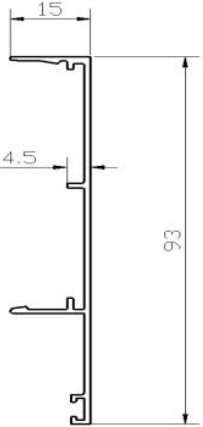
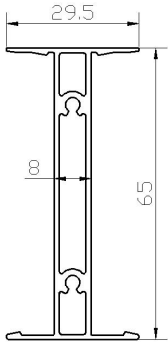
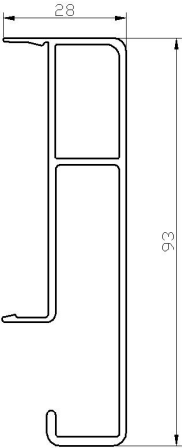
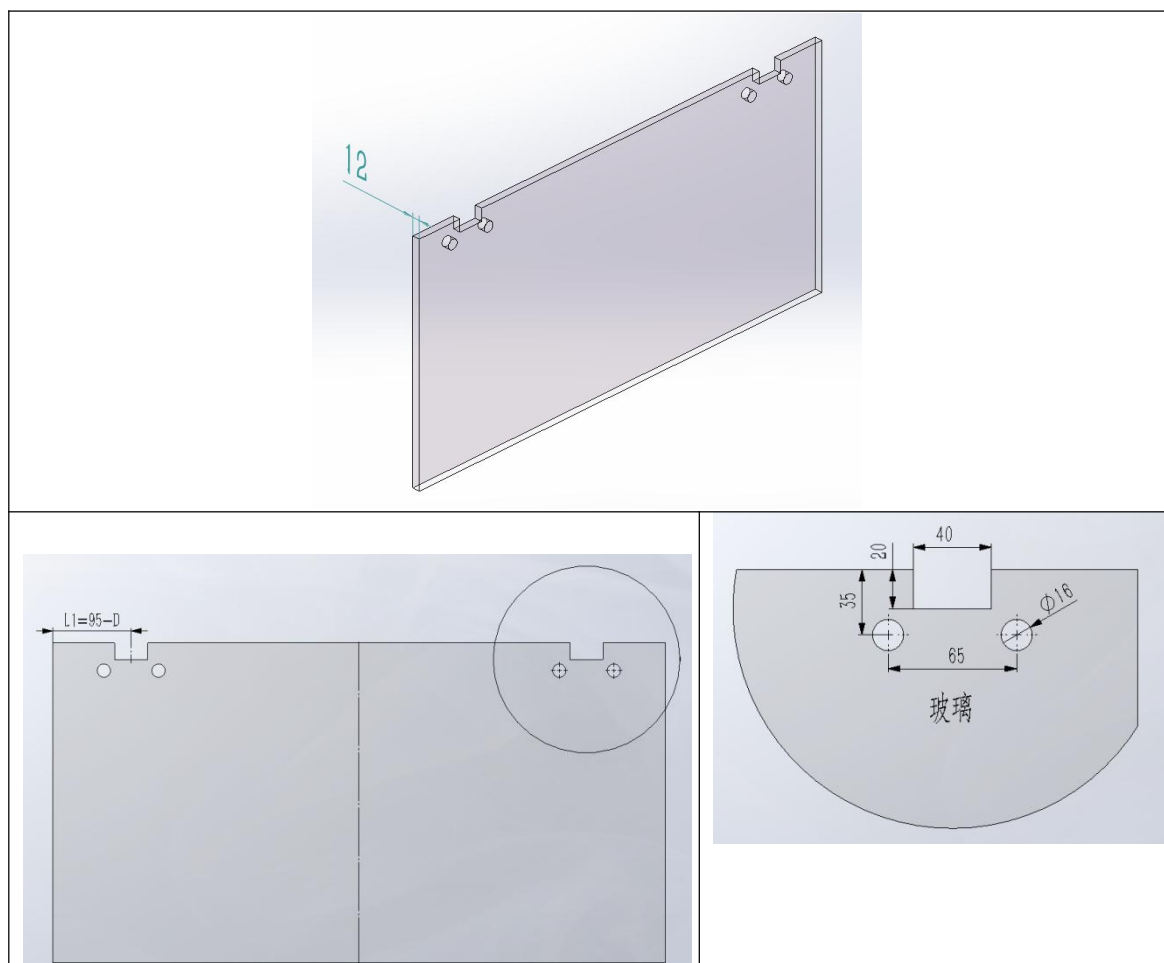


# Electronically controlled atomized glass hanging door installation instructions

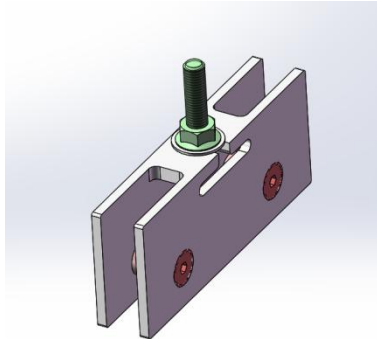
## 1.Profile introduction

Track	Cover plate	H shape piece	Drag chain track cover
			

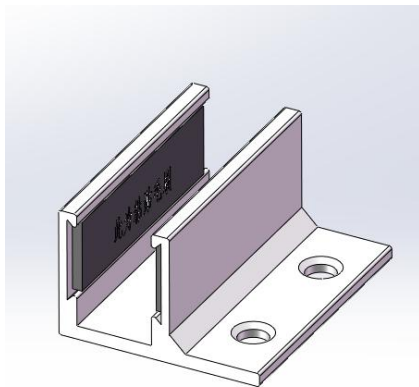
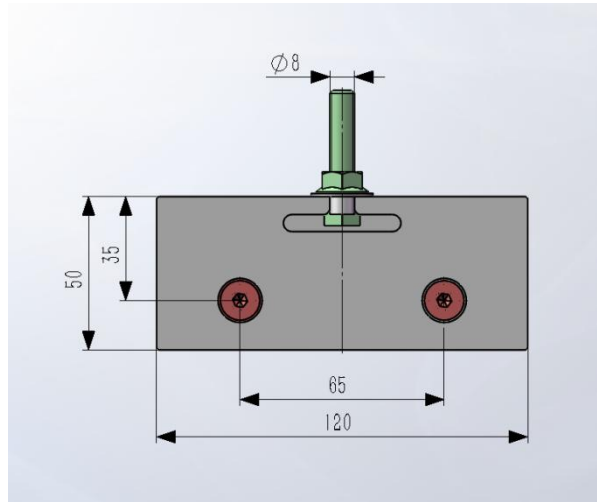
## 2.Door Panel view



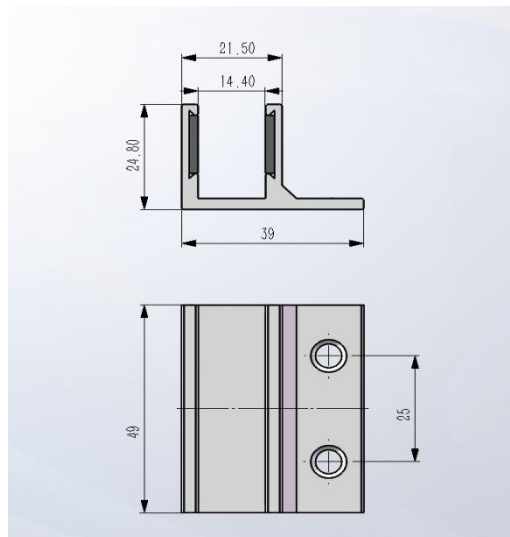
### 3.Accessory

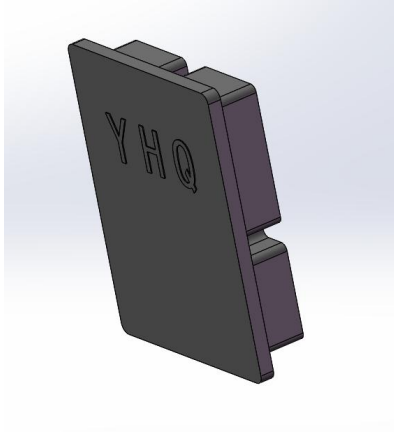


Perforated glass clip

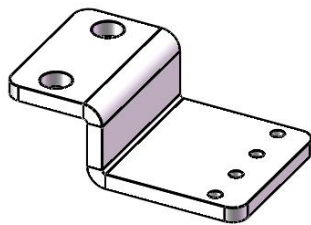
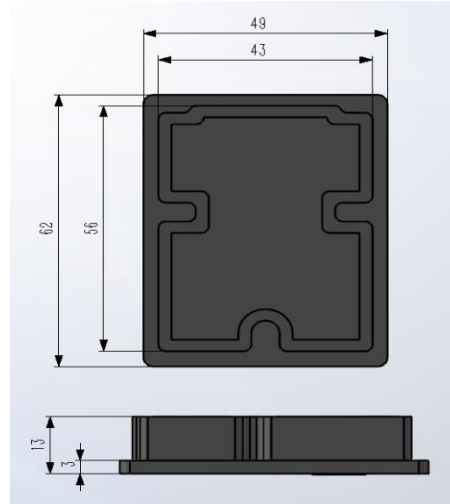


Anti-swing

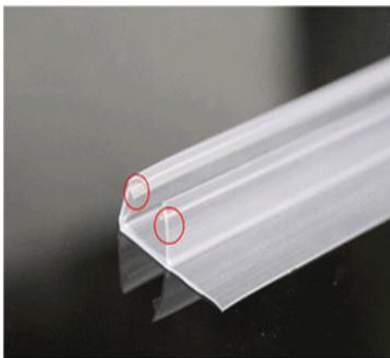
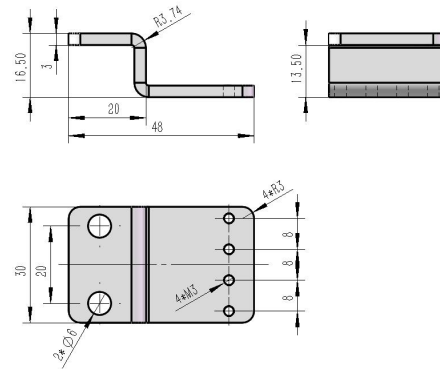




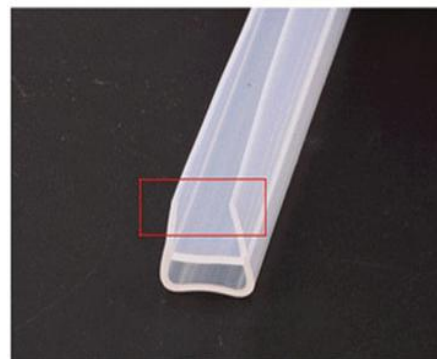
Track end cover



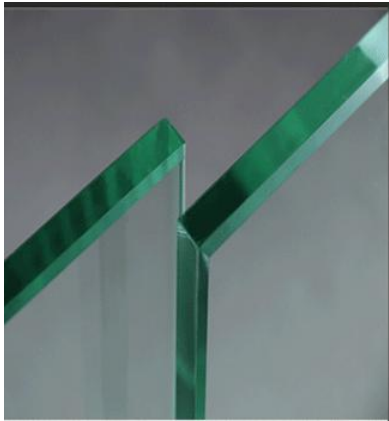
Connector



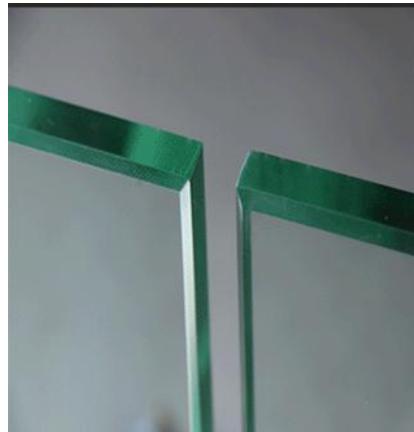
F-type adhesive strip



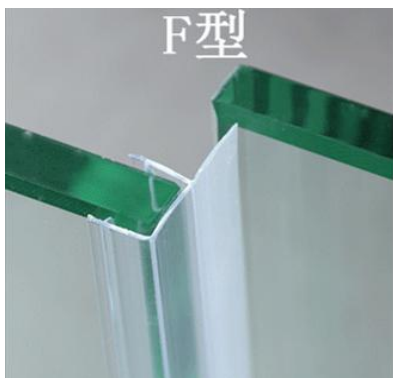
U-type adhesive strip



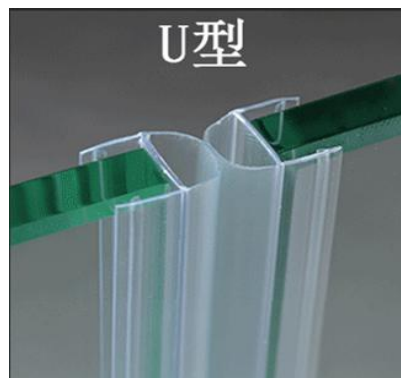
Before sealing



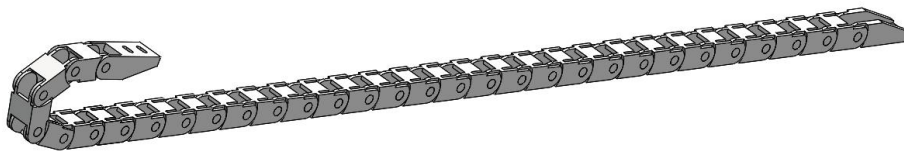
Before sealing



After sealing

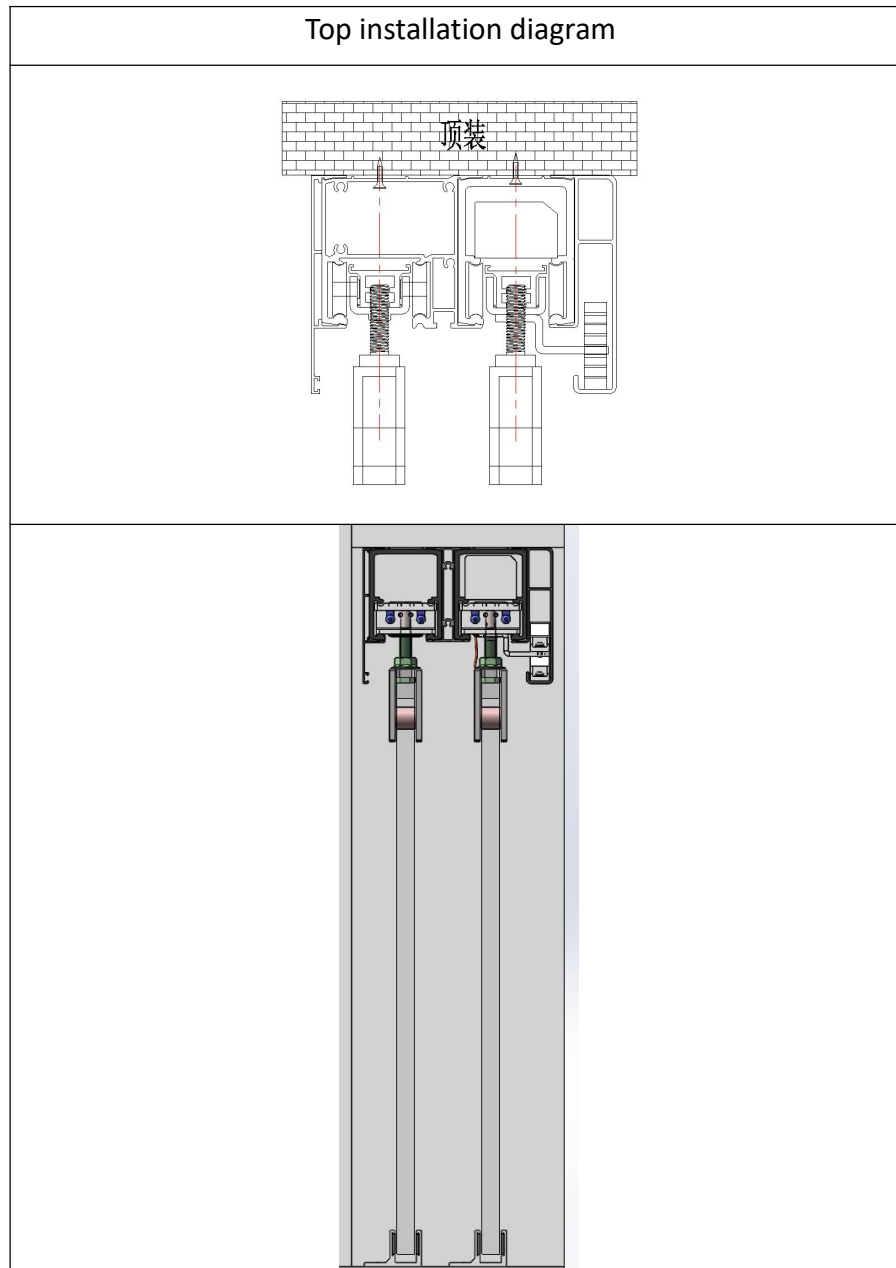


After sealing

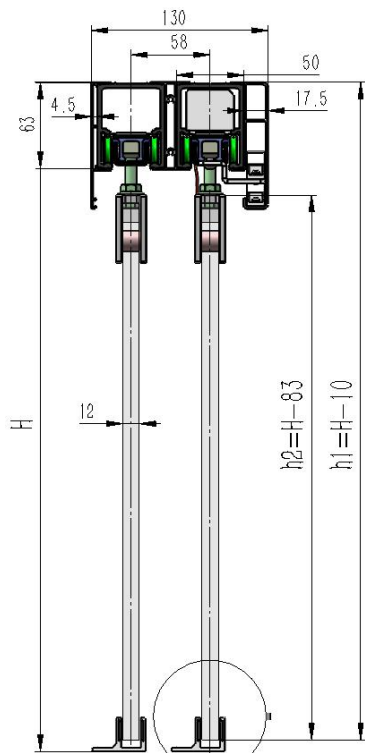


Drag Chain

#### 4. Installation mode

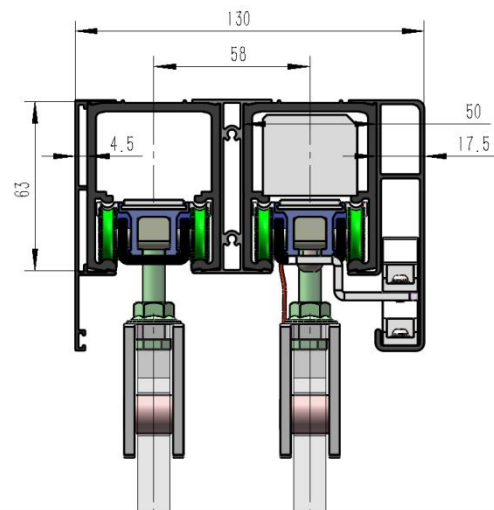
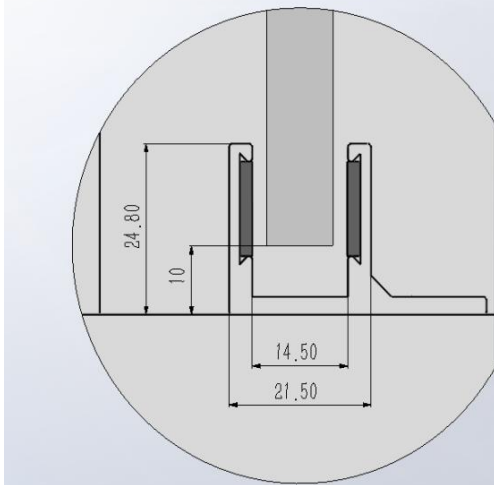


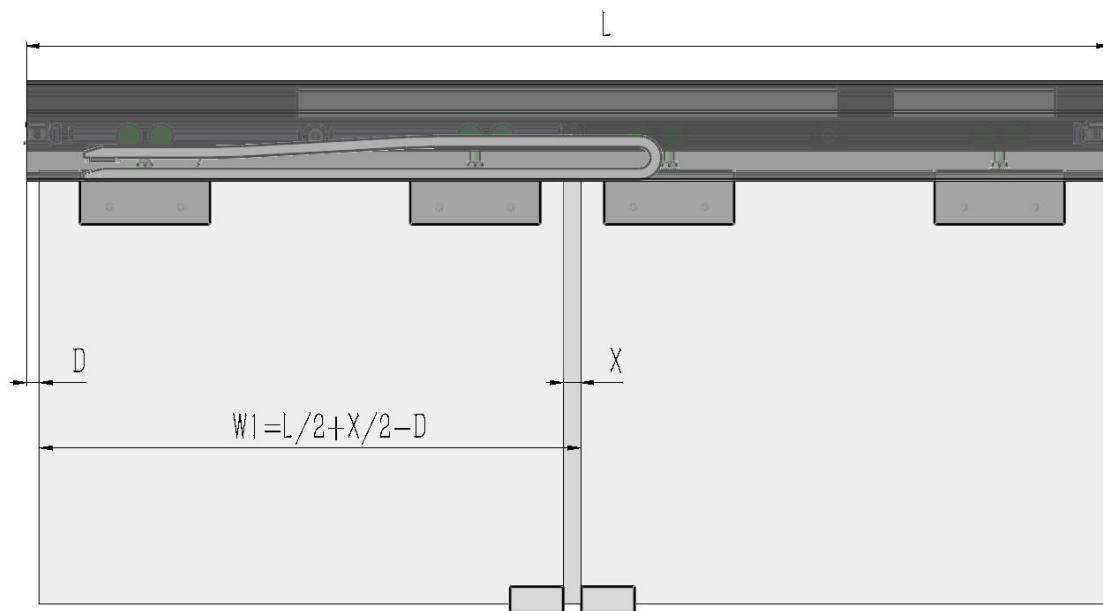
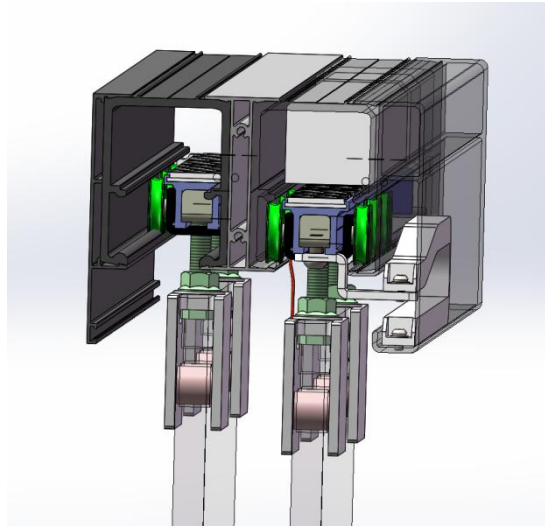
## 5.Installation parameters



Calculation formula: frame size =Center distance+track width+cover plate thickness+drag chain cover plate thickness  
(The center distance and frame size can be adjusted according to requirements)

For example: center distance: 58mm, frame size: 130mm; cover plate thickness:4.5mm; drag chain cover plate thickness: 17.5mm  
Then:Frame size 130mm= center distance58 +track width50 +cover plate thickness 4.5+drag chain cover plate thickness 17.5





Double track single open track

- L: Track length
- W: Door panel width
- X: Overlapping part of two doors
- D: Edge protection distance

